

All TVLogic products are manufactured in Korea

# LXM Series

**Professional 4K/UHD HDR  
Broadcast Monitors with Extensive Features**



*The LXM series monitors are TVLogic's latest generation of 4K/UHD broadcast monitors incorporating innovative hardware and software solutions.*

The LXM series incorporates 12G-SDI Input(x4), 12G-SDI Output(x4), Reference(External Sync) input, HDMI 2.0 Input, SFP Input(x2) & Processed Monitor Output.

These new 4K/UHD monitors feature wide viewing angle IPS panel, various HDR EOTFs, Wide color gamut, 10-bit color depth, and Accurate Color Reproduction by 3D LUT support. Additionally, the LXM series monitors offer the high-performance functions such as HDR-SDR Comparison, 12G-SDI Quad-View and Dual-View display, custom 3D LUT import, SFP to SDI conversion output, Processed monitor output, Waveform, Vector Scope, Audio Phase Meter, Firmware Update by Ethernet, and more. The LXM monitors are ideal for 4K live production, versatile monitoring in the studio and field location, edit suite and post-production.

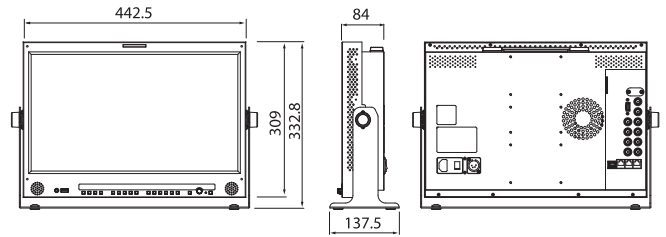
**TVlogic**® Always ON-AIR

# LXM-180U 18.5" 4K/UHD HDR Emulation LCD Monitor



## Main Body Dimensions

**Main Body** 442.5 x 309 x 84 (mm) / 17.42 x 12.16 x 3.30 (inch)  
**With Stand** 489.3 x 332.8 x 137.5 (mm) / 19.26 x 13.1 x 5.41 (inch)  
**Weight** TBD

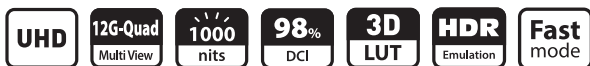


## Optional Accessories



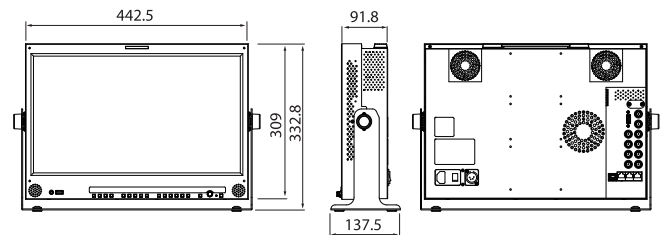
# LXM-180P 18.4" 4K/UHD HDR LCD Monitor with High Brightness

☀️ 1,000nits



## Main Body Dimensions

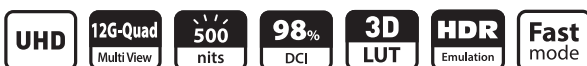
**Main Body** 442.5 x 309 x 91.8 (mm) / 17.42 x 12.16 x 3.61 (inch)  
**With Stand** 489.3 x 332.8 x 137.5 (mm) / 19.26 x 13.1 x 5.41 (inch)  
**Weight** 7.1kg / 15.65lbs



## Optional Accessories

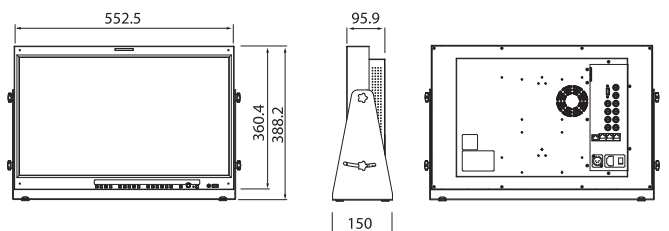


# LXM-240U 24" 4K/UHD HDR Emulation LCD Monitor



## Main Body Dimensions

**Main Body** 552.5 x 360.4 x 95.9 (mm) / 21.75 x 14.18 x 3.77 (inch)  
**With Stand** 586.13 x 388.2 x 150 (mm) / 23.07 x 15.28 x 5.90 (inch)  
**Weight** 10kg / 22.04lbs



## Optional Accessories



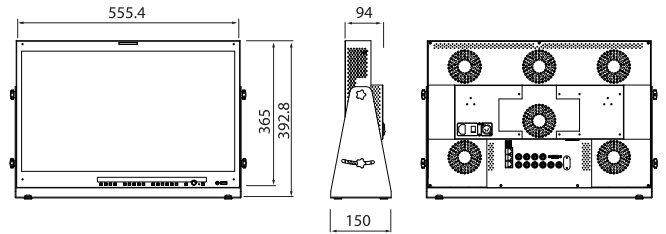
# LXM-240P 24" 4K/UHD HDR LCD Monitor with High Luminance

☀️ 1,000nits



## Main Body Dimensions

**Main Body** 555.4 x 365 x 94 (mm) / 21.86 x 14.37 x 3.70 (inch)  
**With Stand** 586.13 x 392.8 x 150 (mm) / 23.07 x 15.46 x 5.90 (inch)  
**Weight** 12.9kg / 28.44lbs



## Optional Accessories



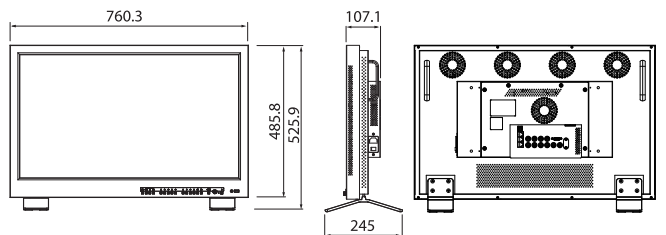
# LXM-320P 32" 4K/UHD HDR LCD Monitor with High Luminance

☀️ 1,000nits



## Main Body Dimensions

**Main Body** 760.3 x 485.8 x 107.1 (mm) / 29.93 x 19.12 x 4.21 (inch)  
**With Stand** 760.3 x 525.9 x 245 (mm) / 29.93 x 20.70 x 9.64 (inch)  
**Weight** 18.4kg / 40.56lbs

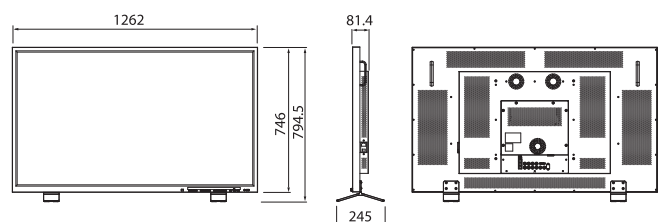


# LXM-550U 55" 4K/UHD HDR Emulation LCD Monitor



## Main Body Dimensions

**Main Body** 1262 x 746 x 81.4 (mm) / 49.68 x 29.37 x 3.20 (inch)  
**With Stand** 1262 x 794.5 x 245 (mm) / 49.68 x 31.27 x 9.64 (inch)  
**Weight** TBD



## Product Highlights

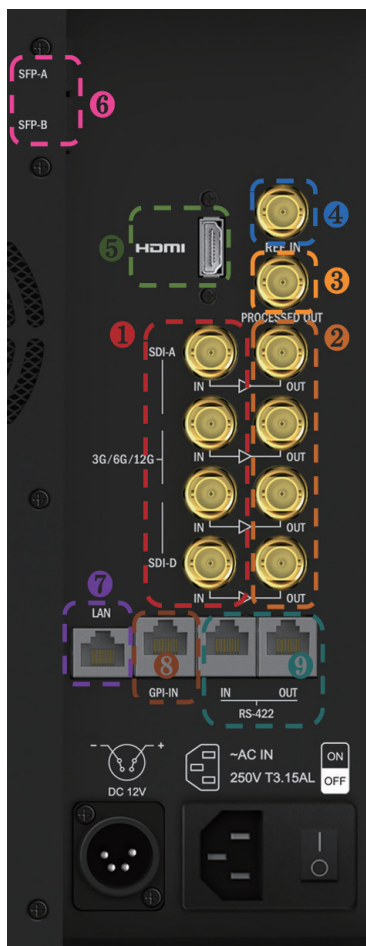
- Peak Luminance 1000nits\*
- HDR (PQ, HLG)
- HDR vs SDR Comparison Display
- Wide Color Gamut (DCI-P3 Coverage up to 98%)
- 1.073 Billion Colors\*\*
- Display Resolution 3840 x 2160\*\*
- Custom 3D LUT Import by USB Flash Drive
- Built-in Camera LUTs
- 4 x 12G-SDI Input and Loopout
- 3G-SDI Quad-Link Input and Loopout
- Reference Input
- Dual SFP Input
- HDMI 2.0 Input
- Quad-View Display
- Picture-by-Picture Display
- Processed Monitor Output
- Various Conversion Output
- Quad Link 12G Input to Single Link 12G Output
- Auto Detection of SDI Payload ID
- Waveform (YCbCr, RGB)
- Vector Scope
- Histogram
- Pixel Color Info Display

- Closed Caption (CC-608, CC-708, OP47)
- Fast Mode
- 16Ch Audio Level Meter
- Audio Phase Meter
- Audio Loudness(LKFS) Meter
- Image Capture & Overlay
- Video Range
- Blue/Mono Only
- H/V Delay
- H Flip, V Flip
- Timecode Display
- Marker
- Luma(Y') Zone Setting
- Focus Assist
- Range Error
- Scan
- User Aspect
- Dynamic UMD
- Tally
- Firmware Update by Ethernet
- Remote Control via Ethernet, RS-422, GPI

\* LXM-180P, LXM-240P, LXM-320P : 1000nits

\*\* LXM-180U : 16.7M colors, 1920 x 1080

## Interface



### SDI Input ①

4 x 12G-SDI Single Link Input  
3G-SDI Quad Link Input

### SDI Output ②

4 x 12G-SDI Single Link Loopout  
3G-SDI Quad Link Loopout

### Processed Output ③

1 x SDI Processed Output  
(Various Conversion Output and Color Processed Output supported)

### Reference Input ④

1 x BNC Input

### HDMI Input ⑤

1 x HDMI 2.0 Input

### SFP+ ⑥

2 x SFP Input

### ETHERNET ⑦

1 x Ethernet In  
(Firmware Update and Remote Control)

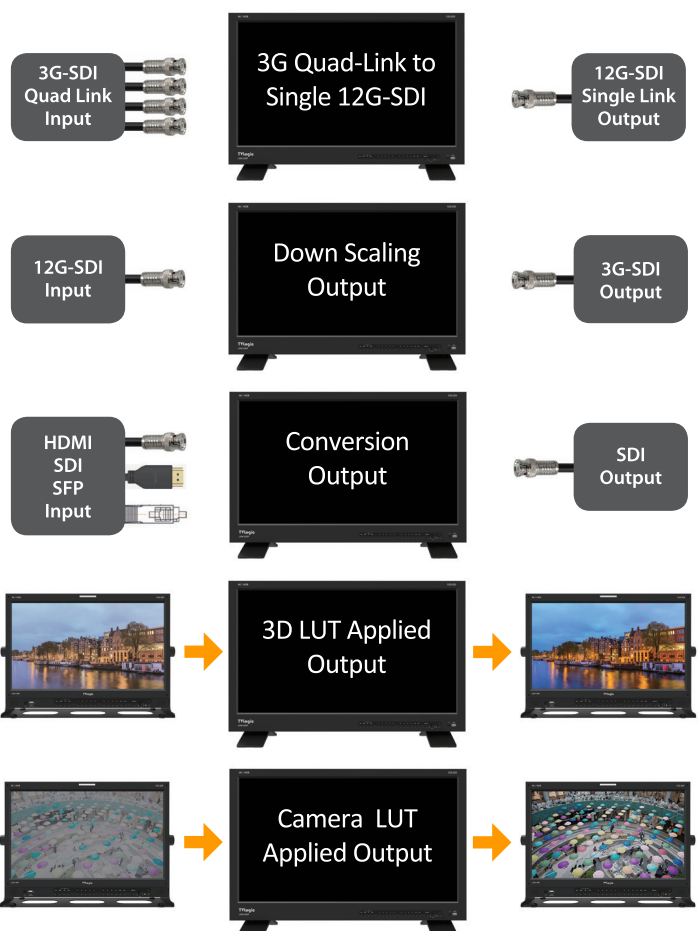
### REMOTE ⑧

1 x RJ-45  
(External Monitor Control)

### RS-422 ⑨

2 x RJ-45 Input & Output  
(Monitor Control by TVLogic or TSL protocol)

## Processed Output



# Key Features

## • HDR Monitoring

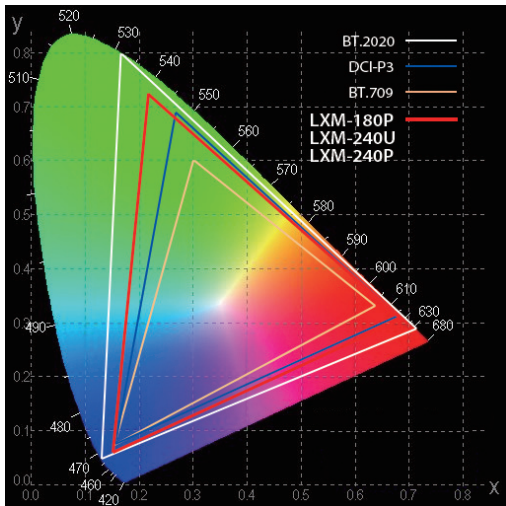
The LXM Series monitors support various HDR EOTFs, including PQ and HLG, which allow the monitors to display HDR content accurately and faithfully.



## • Accurate Color Reproduction with Wide Color Gamut

The LXM Series monitors offer exceptional color performance, with a DCI-P3 color space coverage of 98%\* and the ability to display 1.073 billion colors\*. TVLogic's advanced calibration software ensures accurate color reproduction, resulting in precise and consistent color output.

(\*Some models cover less than DCI-P3 98% or 1.073B colors.)



## • Custom 3D LUT Import & Processed Output

With the LXM Series monitors, users can load and apply their own 3D LUT files, generated by color grading tools. The monitors also support output of the custom 3D LUT applied image to another monitor through an independent port, providing additional flexibility in color management and monitoring.

[LXM Monitor]



[Loop Out]

[Processed Out]



## • HDR vs SDR Comparison

The LXM Series monitors support an HDR and SDR comparison feature, which helps users to compare and adjust HDR and SDR content side by side for optimal viewing.



## • Quad-View Display

The LXM Series monitors support quad view display, allowing up to four different video inputs to be shown on a single screen simultaneously. These monitors can display a variety of input combinations, including SDI, HDMI, and SFP, providing maximum flexibility and versatility.



## • Picture-by-Picture Display

The LXM series monitors offer an extremely useful and advanced PBP feature that enables side-by-side monitoring of a single input image: SDR on one side and HDR on the other. Additionally, each image can display Waveform and/or VectorScope data. This feature also supports side-by-side monitoring of two different input sources.



## • Image Capture & Overlay

[Captured Image]



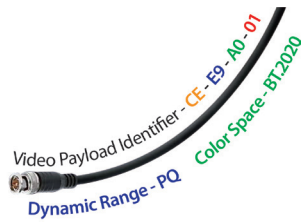
[Live Image]

[Matched Images]



This feature allows users to capture and save an image from the scene and subsequently overlay it onto the live view. The opacity of the captured image can be adjusted during the overlay process. This functionality proves invaluable for achieving scene matching when resuming the shot.

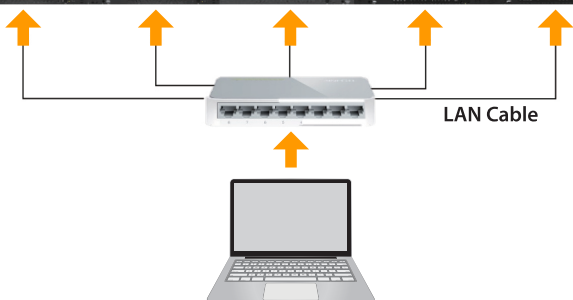
## • Auto Detection of SDI Payload ID



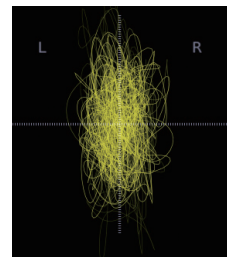
This function enables the LXM monitors to automatically detect EOTF and Color Space information from the video Payload ID using SMPTE ST 352 when an SDI signal is connected, and subsequently adjust the settings accordingly.

## • Firmware Update via Ethernet

All LXM monitors can be connected to Ethernet, enabling convenient remote firmware updates over the network. This feature makes it easy to keep your monitor up-to-date with the latest software enhancements and improvements.

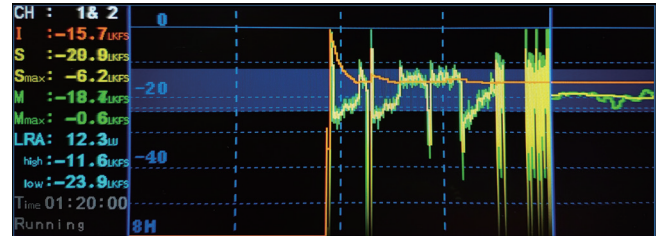


## • Various Audio Monitoring Functions



[Audio Phase Meter]

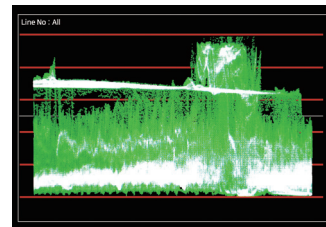
The LXM series provides an array of audio monitoring tools, including the Audio Level Meter, Audio Phase Meter, and Audio Loudness (LKFS) Meter. LKFS is utilized for consistent loudness control in program exchange, ensuring uniformity across different sources and program types.



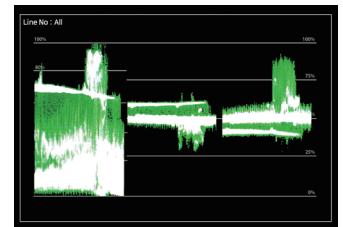
[Audio Loudness(LKFS) Meter]

## • Various Scope - Waveform, VectorScope, Histogram

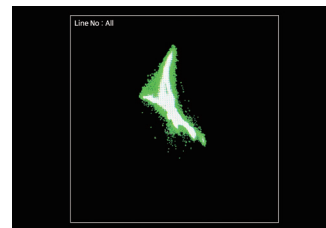
The LXM can display the input signal's Waveform, VectorScope, and Histogram. Both the Waveform and VectorScope offer multiple modes and can be shown simultaneously. Additionally, users can opt to display the Waveform of a specific selected line.



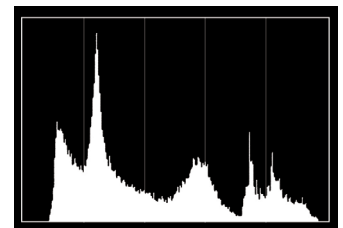
[Waveform]



[Waveform YCbCr]



[VectorScope]



[Histogram]

## • Reference Input for Genlock

The LXM series monitors feature a Reference Input for genlock. Genlock (generator locking) is utilized to synchronize multiple cameras. It ensures that if the source is switched from one camera to another, the frame rate, color burst, and line rate remain consistent. This ensures that viewers see the correct picture without distortion or delay. Genlock also ensures proper synchronization among multiple input videos, which is crucial in settings like television studios with multiple cameras.

# Specifications

	LXM-180U	LXM-180P	LXM-240U	LXM-240P	LXM-320P	LXM-550U
<b>LCD Panel</b>						
Size	18.5"	18.4"	23.8"	23.8"	31.5"	54.6"
Resolution	1920 x 1080 (16:9)	3840 x 2160 (16:9)	3840 x 2160 (16:9)	3840 x 2160 (16:9)	3840 x 2160 (16:9)	3840 x 2160 (16:9)
Pixel Pitch	0.213(H) x 0.213(V) mm	0.035(H) x 0.106(V) mm	0.137(H) x 0.137(V) mm	0.137(H) x 0.137(V) mm	0.182(H) x 0.182(V) mm	0.315(H) x 0.315(V) mm
Color Depth	16.7M Colors (8 bit)	1.07B Colors (10 bit)	1.07B Colors (10 bit)	1.07B Colors (10 bit)	1.07B Colors (10 bit)	1.07B Colors (10 bit)
Viewing Angle	178°(H) / 178°(V)	170°(H) / 170°(V)	178°(H) / 178°(V)	178°(H) / 178°(V)	178°(H) / 178°(V)	178°(H) / 178°(V)
Luminance of white	500cd/m2	1000cd/m2	500cd/m2	1000cd/m2	1000cd/m2	700cd/m2
Contrast Ratio	1000 : 1	1000 : 1	1200 : 1	1000 : 1	1000 : 1	1100 : 1
Display Area	408.96(H) x 230.04(V) mm	408.96(H) x 230.04(V) mm	525.7(H) x 295.7(V) mm	527.0(H) x 296.5(V) mm	697.31(H) x 392.23(V) mm	1209.6(H) x 680.4(V) mm
<b>Input</b>						
4 x BNC	12G/6G/3G/HD/SD-SDI A/B/C/D Channel Input					
1 x HDMI	HDMI 2.0 Input					
2 x SFP	SFP A/B Channel Input					
1 x BNC	Reference Input					
<b>Output</b>						
4 x BNC	12G/6G/3G/HD/SD-SDI A/B/C/D Channel Output					
1 x BNC	Processed Output					
<b>Input Signal</b>						
12G-SDI	12Gb/s	12Gb/s	12Gb/s	12Gb/s	12Gb/s	12Gb/s
6G-SDI	6Gb/s	6Gb/s	6Gb/s	6Gb/s	6Gb/s	6Gb/s
3G-SDI	2.970Gb/s	2.970Gb/s	2.970Gb/s	2.970Gb/s	2.970Gb/s	2.970Gb/s
HD-SDI	1.485Gb/s	1.485Gb/s	1.485Gb/s	1.485Gb/s	1.485Gb/s	1.485Gb/s
HDMI 2.0	480p/720p/1080p/2160p	480p/720p/1080p/2160p	480p/720p/1080p/2160p	480p/720p/1080p/2160p	480p/720p/1080p/2160p	480p/720p/1080p/2160p
<b>SDI Input Signal Formats</b>						
SMPTE ST 2082	3840x2160 (60/50/30/25/24p)					
SMPTE ST 2081	3840x2160 (30/25/24p)					
SMPTE ST 2036-1	3840x2160(23.98/24/25/29.97/30/50/59.94/60p)					
SMPTE-425M-A/B	1080p(60/59.94/50/30/29.97/25/24/23.98/30sF/29.97sF/25sF/24sF/23.98sF)					
	1080i(60/59.94/50)					
SMPTE-274M	1080i (60/59.94/50)					
	1080p (30/29.97/25/24/24sF/23.98/23.98sF)					
SMPTE-296M	720p (60/59.94/50)					
SMPTE-260M	1035i (60/59.94)					
SMPTE-125M	480i (59.94)					
ITU-R BT.656	576i (50)					
SMPTE ST 2048-2	2048x1080(23.98/24/25/29.97/30p/psf, 47.95/48/50/59.94/60p)					
<b>Remote Control &amp; Update</b>						
1 x LAN	RJ-45 Input(Ethernet), Firmware Update & Remote Control					
1 x REMOTE	RJ-45 Input, GPI Control					
2 x RS-422	RJ-45 Input & Output, Monitor Control by TVLogic Protocol or TSL Protocol					
1 x USB	USB A type, Firmware Update					
<b>General</b>						
Audio Out	Internal Speakers (Stereo 3W x 3W) / Analog Stereo (Phone Jack)				-	-
Power	AC100~240V(50~60Hz) DC 12V/24V	AC100~240V(50~60Hz) DC 12V/24V	AC100~240V(50~60Hz) DC 12V/24V	AC100~240V(50~60Hz) DC 15V/24V	AC100~240V(50~60Hz)	AC100~240V(50~60Hz)
Power Consumption	TBD	TBD	TBD	TBD	TBD	TBD
Operating Temperature	0°C to 35°C (32°F to 95°F)					
Storage Temperature	-20°C to 60°C (-4°F to 140°F)					
Dimensions : Main Body	442.5 x 309 x 84 (mm) 17.42 x 12.16 x 3.30 (inch)	442.5 x 309 x 91.8 (mm) 17.42 x 12.16 x 3.61 (inch)	552.5 x 360.4 x 95.9 (mm) 21.75 x 14.18 x 3.77 (inch)	555.4 x 365 x 94 (mm) 21.86 x 14.37 x 3.70 (inch)	760.3 x 485.8 x 107.1 (mm) 29.93 x 19.12 x 4.21 (inch)	1262 x 746 x 81.4 (mm) 49.68 x 29.37 x 3.20 (inch)
Dimensions : With Stand	489.3 x 332.8 x 137.5 (mm) 19.26 x 13.1 x 5.41 (inch)	489.3 x 332.8 x 137.5 (mm) 19.26 x 13.1 x 5.41 (inch)	586.13 x 388.2 x 150 (mm) 23.07 x 15.28 x 5.90 (inch)	586.13 x 392.8 x 150 (mm) 23.07 x 15.46 x 5.90 (inch)	760.3 x 525.9 x 245 (mm) 29.93 x 20.70 x 9.64 (inch)	1262 x 794.5 x 245 (mm) 49.68 x 31.27 x 9.64 (inch)
Dimensions : Shipping Box	550 x 460 x 300 (mm) 21.65 x 18.11 x 11.81 (inch)	550 x 460 x 300 (mm) 21.65 x 18.11 x 11.81 (inch)	680 x 540 x 300 (mm) 26.77 x 21.26 x 11.81 (inch)	680 x 540 x 300 (mm) 26.77 x 21.26 x 11.81 (inch)	920 x 360 x 790 (mm) 36.22 x 14.17 x 31.10 (inch)	1410 x 410 x 1050 (mm) 55.51 x 16.14 x 41.34 (inch)
Weight (with stand)	TBD	7.1kg / 15.65lbs	10kg / 22.04lbs	12.9kg / 28.44lbs	18.4kg / 40.56lbs	TBD
Basic Accessories	AC Power Cord, Stand					
Optional Accessories	V-mount, G-mount Acrylic Filter, Sun Hood Rack Mount Kit Carrying Case	V-mount, G-mount Acrylic Filter, Sun Hood Rack Mount Kit Carrying Case	V-mount, G-mount Acrylic Filter Rack Mount Kit Carrying Case	V-mount, G-mount Acrylic Filter Rack Mount Kit Carrying Case	-	-

\*The specifications above may be changed without notice.

# Global Sales Network

## AMERICAS

<b>USA</b>	
TVLogic USA	T. (+1) 818 885 6442 E. jin@TVLogicUSA.com
<b>CANADA</b>	
CEV	T. (+1) 800 337 8835 E. sales@cev.ca
HD Source	T. (+1) 905 890 6905 E. ken@hdsources.ca
Rocket	T. (+1) 416 729 2420 E. ed.labanowicz@we-rocket.ca
<b>ARGENTINA</b>	
BVS Television	T. (+54) 11 4958 5638 E. roberto@bvstv.com
<b>BRAZIL</b>	
Phase	T. (+55) 21 2493 0125 E. phase@phase.com.br
<b>COLOMBIA</b>	
Cricon International	T. (+1) 954 749 3161 E. info@cricon-icee.com
VideoElec	T. (+57) 1 256 7892 E. hernando.rubio@videoelec.com
<b>LATIN AMERICA</b>	
Seal Telecom	T. (+55) 11 3877 4017 E. andrea.candia@convergint.com
<b>PERU</b>	
Meditel Peru	T. (+51) 988 888 223 E. carlos.escudero@meditelperu.com.pe
<b>PUERTO RICO</b>	
RGB Broadcast	T. (+1) 787 793 8091 E. sales@RGBBroadcast.com
<b>VENEZUELA</b>	
AVCOM	T. (+58) 212 239 09 44 E. info@avcom.com.ve

## ASIA PACIFIC

<b>AUSTRALIA / NEW ZEALAND</b>	
Techtel	T. (+61) 2 9906 1488 E. mchandler@techtel.com.au
<b>CHINA</b>	
Luoshijie Video	T. (+86) 10 6415 3009 E. suzyking@chinaTVLogic.com
<b>HONG KONG</b>	
i-Solutions	T. (+852) 3568 6530 E. wilson@i-solutions.com.hk
<b>INDIA</b>	
ARK International	T. (+91) 224 201 8000 E. mohan.rawat@arkininfo.in
<b>INDONESIA</b>	
EMD Store	T. (+62) 81 1914 9991 E. emdstoreid@gmail.com
Media Integra	T. (+62) 21 8430 8883 84 E. alex@ptmediaintegra.com
Vitesse	T. (+62) 568 6505 E. vitesse.system@gmail.com
<b>JAPAN</b>	
IDX	T. (+81) 44 850 8801 E. shinichi.haishi@idx.tv
<b>KAZAKHSTAN</b>	
DNK-TV	T. (+7) 7273 440 651 E. info@dnk.kz
TV-Intergration	T. (+7) 7172 757 797 E. info@tvi.kz

<b>MALAYSIA</b>	
ACS Solution	T. (+60) 3 8011 4421 E. info@acssolution.com.my
Cedar	T. (+60) 12 677 7208 E. aden@cedar.com.my
VME Broadcast	T. (+60) 3 8023 2266 E. nizz.vme@gmail.com
<b>SINGAPORE</b>	
BES	T. (+65) 6554 0110 E. sales@bes.com.sg
New Cine	T. (+65) 9862 5665 E. newcine@singnet.com.sg
Soheto	T. (+65) 6339 7748 E. singapore@soheto.com.sg

<b>THAILAND</b>	
Strong Brothers 1961	T. (+66) 2361 7246 E. kulavit@strong1961.co.th
Dunk	T. (+66) 2 043 9982 E. amorn_av@yahoo.com

<b>TAIWAN</b>	
Joint Media System	T. (+886) 2 8791 8087 E. joint@hibox.hinet.net

<b>PHILIPPINES</b>	
BMH Systems	T. (+623) 411 1723 E. anbautista@bmh-systems.com

<b>VIETNAM</b>	
VTV Broadcom	T. (+84) 28 2253 3025 E. ky.vo@vtvms.vn

## EUROPE

<b>AZERBAIJAN</b>	
MediaTech	T. (+994) 12 434 7856 E. teymur.suleymanov@mediatech.az

<b>BELGIUM / NETHERLANDS / LUXEMBOURG</b>	
Aspectra	T. (+31) 10 514 0680 E. backoffice@aspectra.nl

<b>BULGARIA</b>	
Bulcomp	T. (+359) 32 962 758 E. info@bulcomp.com

<b>CZECH</b>	
Smart Informatics	T. (+420) 602 545 270 E. jakub.vanek@smartinformatics.cz

<b>DENMARK</b>	
Hofmann DK	T. (+45) 32 97 80 97 E. peter@hofmann.dk

<b>FINLAND</b>	
MediaTrade	T. (+358) 201557712 E. lauri.virkki@mediatrade.fi

<b>FRANCE</b>	
SAV	T. (+33) 1 53 38 22 00 E. asales@sav.tv

<b>GERMANY / SWITZERLAND / AUSTRIA</b>	
Aspectra	T. (+31) 10 514 0680 E. backoffice@aspectra.nl

<b>GREECE</b>	
Pierides Techno Sys	T. (+30) 210 6836750 E. faliakis.dimitris@pts.gr

<b>HUNGARY</b>	
StudioTech Hungary	T. (+36) (1) 240 1444 / 114 E. sales@studiotech.hu

<b>ITALY</b>	
Video Progetti	T. (+39) 335 610 7883 E. francesco.struzzi@videoprogetti.it

<b>LATVIA</b>	
Hannu Pro	T. (+371) 6745 2206 E. arnis.opmanis@hannu-pro.com

<b>LITHUANIA</b>	
TVC	T. (+370) 41 52 0295 E. sales@tvc.tv

<b>POLAND</b>	
JBD S.A	T. (+48) 603 649 651 E. tomasz.slazak@jbd.com.pl

<b>Poland</b>	
Twenty4Seven	T. (+48) 22 632 66 22 E. kk@twenty4seven.pl

<b>RUSSIA</b>	
OKNO-TV	T. (+7) 495 543 93 93 E. motornaya@okno-tv.ru

<b>SINKHRO</b>	
Synchro Online	T. (+7) 499 258 5305 E. kublov@miravideo.ru

<b>Synchro Online</b>	
ProVideo Systems	T. (+7) 926 837 50 99 E. german@synchro.ru

<b>ProVideo Systems</b>	
	T. (+7) 916 929 0531 E. ep@provis.ru

<b>SERBIA</b>	
Visual Impact	T. (+381) 11 369 0043 E. darko@visuals.rs

<b>SLOVAK REPUBLIC</b>	
Elektronika	T. (+421) 24 020 0711 E. michal.kolik@elektronika-as.sk

<b>SPAIN-PORTUGAL</b>	
Meditel	T. (+34) 91 572 11 45 E. enrique.bueno@meditel.es

<b>SWEDEN / NORWAY</b>	
Hofmann Teknik	T. (+46) 31 719 39 10 E. m@hofmann.se

<b>TURKEY</b>	
Radikal	T. (+90) 212 259 7971 E. kerem@radikaltr.com

<b>UKRAINE</b>	
Comtel	T. (+380) 44 537 64 32 E. sergey@comtel.ua

<b>OPTA</b>	
Patriot Rental	T. (+380) 44 454 14 04 E. logistic1@opta.kiev.ua

<b>Patriot Rental</b>	
	T. (+380) 96 109 31 09 E. a.lobanov@patriot.ua

<b>UK</b>	
Aspectra	T. (+31) 10 514 0680 E. backoffice@aspectra.nl

## AFRICA & MIDDLE EAST

<b>EGYPT</b>	
Brain Waves	T. (+20) 114 0551054 E. mohamed.soliman@bwaves.com

<b>Systems Design</b>	
	T. (+20) 2 3833 5320 E. ahmedg@systemsdesign.tv

<b>ISRAEL</b>	
Draco	T. (+972) 9 9554253 E. zoharf@draco.co.il

<b>MOROCCO</b>	
Sigma Technologies	T. (+212) 05223 68687 E. dino@sigmatechno.com

<b>SOUTH AFRICA</b>	
Inala Broadcast	T. (+27) 11 073 0100 E. colin.wainer@inalabroadcast.co.za

<b>UAE</b>	
Aspectra	T. (+31) 10 514 06 80 E. backoffice@aspectra.nl

<b>BSS Trading</b>	
	T. (+971) 4 2368787 E. sales@bss-me.com